



Forest Service  
U.S. DEPARTMENT OF AGRICULTURE



## Valentine Fire Update

### Wednesday, September 20, 2023

**Size:** 5,300 acres  
**Cause:** Lightning  
**Completion:** 66%  
**Total personnel:** 173

**Start Date:** August 16, 2023  
**Location:** 11 miles northeast of Young, Arizona and 27 miles east of Payson, Arizona  
**Fuels:** Ponderosa Pine, Hardwood litter and timber

**Highlights:** The warmer weather allowed fuels to dry out and allow crews to continue making progress along the southern and western borders.

**Operations:** Yesterday, conditions allowed crews to continue hand and aerial ignitions on the south perimeter along FSRD 411 moving towards FSRD 200. Tactical firing operations continued down Chamberlain Trail (FSRD 200) on the west perimeter towards the FSRD 848, making good progress. Today, crews will continue with hand and aerial ignitions on the west side along the Chamberlain Trail Road (FSRD 200). Crews will continue monitoring the fire within the interior along the ridgelines and drainages.

**Fire Ecology:** A unique species growing in the vicinity of the Valentine fire is Chihuahuan pine. Chihuahuan pine has many fire adaptations and fire-associated regeneration strategies. After a fire, it regenerates by producing abundant seeds that are dropped from serotinous cones to the newly burned forest floor. It's protected from fire by thick bark and, even when the crowns burn, it has the ability to send out new shoots to regrow. Fire may even allow Chihuahuan pine to become more dominant by eliminating less fire tolerant species.

**Weather:** On Tuesday, temperatures were in the mid 70's with winds out of the southwest. Wednesday's forecast calls for temperatures hovering around 75 degrees with variable winds out of the southwest.

**Closures:** An emergency closure order for the Valentine Fire has gone into effect as of 6 a.m. Sept. 5, 2023. The public is asked to avoid the fire area. The purpose of the closure order is to protect public health and safety during the Valentine Fire and to protect assigned firefighting personnel engaging in wildland firefighting operations. Signs and gates will be in place to remind the public not to enter the fire area. Please visit the Alerts and Notices page for more information.

<https://www.fs.usda.gov/alerts/tonto/alerts-notice>.

**Safety:** The health and safety of firefighters and the public are always the highest priority. Members of the public are asked to avoid the fire area.

**Smoke:** The fire may produce additional smoke due to tactical firing operations. Smoke from the Valentine Fire may be visible in the surrounding areas for multiple days. Smoke-sensitive individuals and people with respiratory problems or heart disease are encouraged to take precautionary measures. An interactive smoke map at <https://www.airnow.gov/wildfires/> lets you zoom into your area to see the latest smoke conditions.

#### Information Links and Contacts

Tonto National Forest: <https://www.fs.usda.gov/main/tonto/fire>

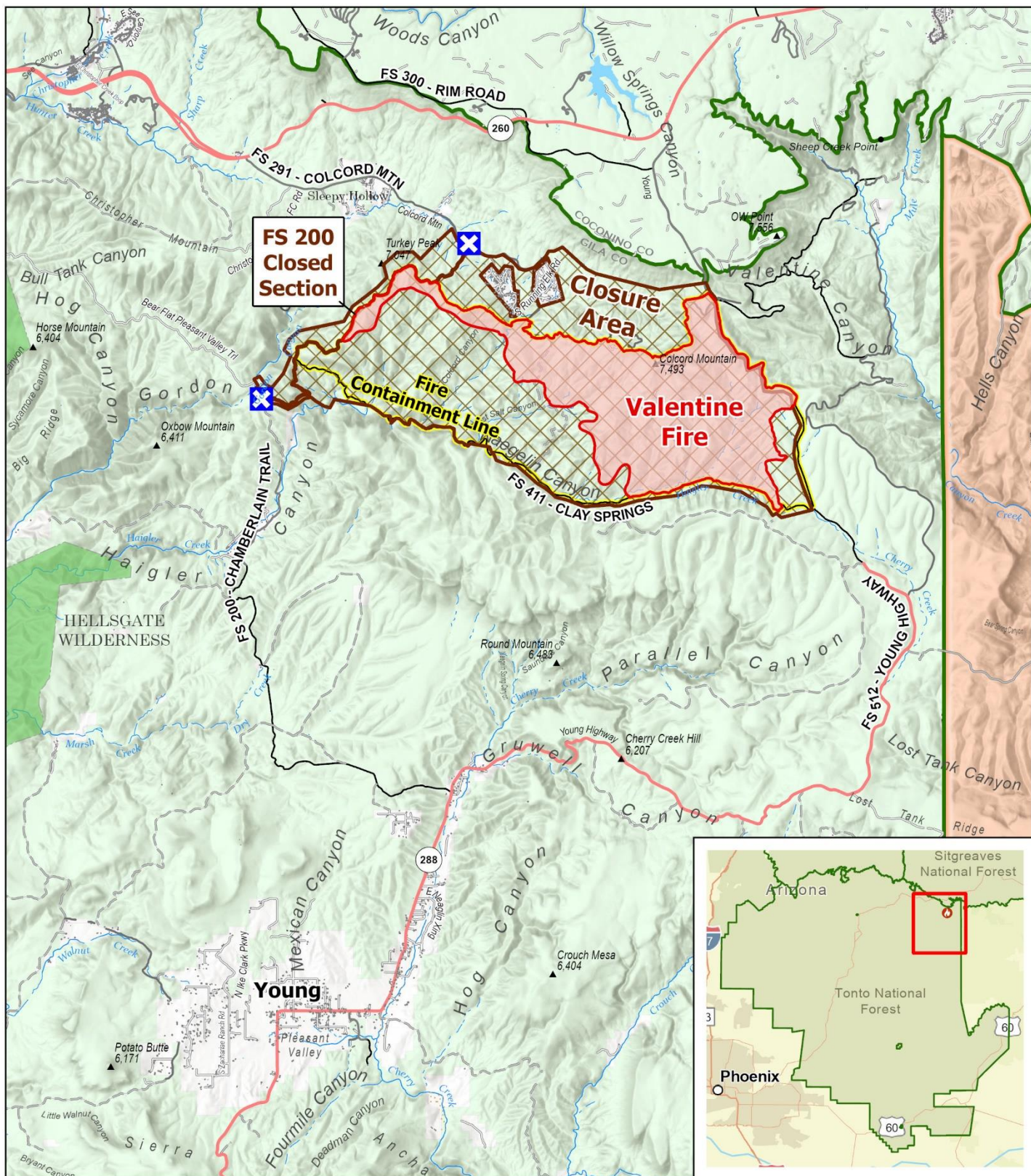
**InciWeb:** <https://inciweb.nwcg.gov/incident-information/aztnf-valentine-fire>

**Fire Email:** [2023.valentine@firenet.gov](mailto:2023.valentine@firenet.gov)

**Fire Information Line:** (928)-421-4579 • Office Hours: 8:00 AM – 8:00 PM



<https://linktr.ee/valentinefire>



# **PUBLIC INFORMATION**

Valentine Fire  
 AZ-TNF-1315  
 9/20/2023  
 5,300 acres as of 9/19/2023  
 1:125,000 - Tonto GIS  
 9/19/2023 1842  
 Acres from IR and GPS  
 North American 1983 Datum, Lat/Long Grid

- |                       |                   |                         |
|-----------------------|-------------------|-------------------------|
| Closure on FS 200     | Secondary Highway | Forest Service Boundary |
| Wildfire Perimeter    | Secondary Dirt    | Forest Service Land     |
| Closure Area          | Wilderness        | State Land              |
| Fire Containment Line | Lake / Pond       | Tribal Land             |

